

EDWARD HILLSTROM ARCHITECT

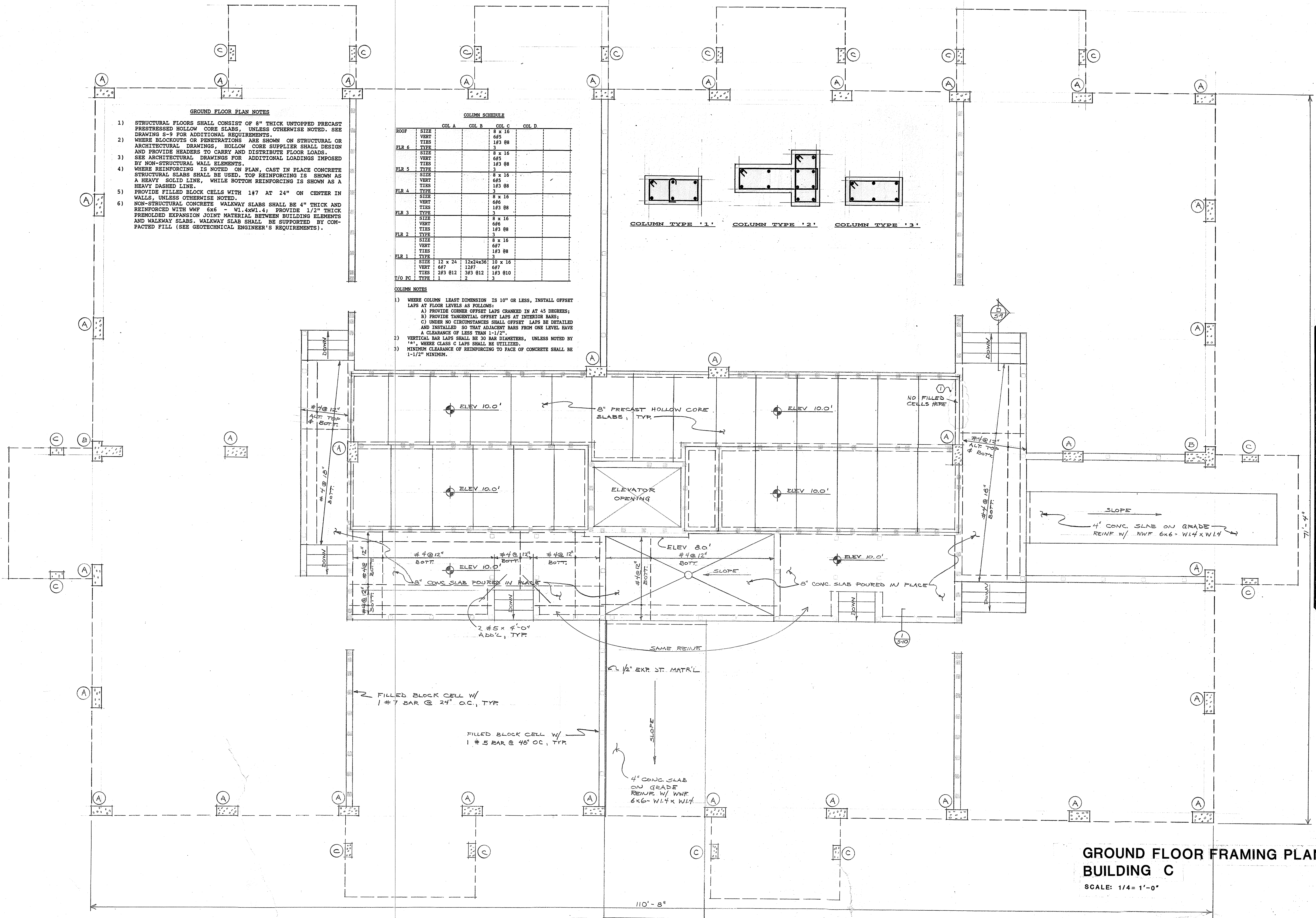
PALM BEACH LANDINGS

190 UNIT CONDOMINIUM  
CALOOSAHATCHEE AT BILLY'S CREEK

GROUND FLOOR FRAMING PLAN  
BUILDING - C

8/4/86  
9/23/86

S4A



**GROUND FLOOR PLAN NOTES**

- 1) STRUCTURAL FLOORS SHALL CONSIST OF 8" THICK UNTOPPED PRECAST PRESSED HOLLOW CORE SLABS, UNLESS OTHERWISE NOTED. SEE DRAWING S-9 FOR ADDITIONAL REQUIREMENTS.
- 2) WHERE BLOCKOUTS OR PENETRATIONS ARE SHOWN ON STRUCTURAL OR ARCHITECTURAL DRAWINGS, HOLLOW CORE SUPPLIER SHALL DESIGN AND PROVIDE HEADERS TO CARRY AND DISTRIBUTE FLOOR LOADS.
- 3) SEE ARCHITECTURAL DRAWINGS FOR ADDITIONAL LOADINGS IMPOSED BY NON-STRUCTURAL WALL ELEMENTS.
- 4) WHERE REINFORCING IS NOTED ON PLAN, CAST IN PLACE CONCRETE STRUCTURAL SLABS SHALL BE USED. TOP REINFORCING IS SHOWN AS A HEAVY SOLID LINE, WHILE BOTTOM REINFORCING IS SHOWN AS A HEAVY DASHED LINE.
- 5) PROVIDE FILLED BLOCK CELLS WITH 1#7 AT 24" ON CENTER IN WALLS, UNLESS OTHERWISE NOTED.
- 6) NON-STRUCTURAL CONCRETE WALKWAY SLABS SHALL BE 4" THICK AND REINFORCED WITH WWF 6x6 - W1.4xW1.4; PROVIDE 1/2" THICK PREWOLDED EXPANSION JOINT MATERIAL BETWEEN BUILDING ELEMENTS AND WALKWAY SLABS. WALKWAY SLAB SHALL BE SUPPORTED BY COMPACTED FILL (SEE GEOTECHNICAL ENGINEER'S REQUIREMENTS).

**COLUMN SCHEDULE**

	COL. A	COL. B	COL. C	COL. D
ROOF	SIZE		8 x 16	
	VERT		6#5	
	TIES		1#3 @8	
FLR 6	TYPE		3	
	SIZE		8 x 16	
	VERT		6#5	
	TIES		1#3 @8	
FLR 5	TYPE		3	
	SIZE		8 x 16	
	VERT		6#5	
	TIES		1#3 @8	
FLR 4	TYPE		3	
	SIZE		8 x 16	
	VERT		6#6	
	TIES		1#3 @8	
FLR 3	TYPE		3	
	SIZE		8 x 16	
	VERT		6#6	
	TIES		1#3 @8	
FLR 2	TYPE		3	
	SIZE		8 x 16	
	VERT		6#7	
	TIES		1#3 @8	
FLR 1	TYPE		3	
	SIZE	12 x 24	12x24x36	10 x 16
	VERT	6#7	12#7	6#7
	TIES	2#3 @12	3#3 @12	1#3 @10
T/O FC	TYPE	1	2	3

**COLUMN NOTES**

- 1) WHERE COLUMN LEAST DIMENSION IS 10" OR LESS, INSTALL OFFSET LAPS AT FLOOR LEVELS AS FOLLOWS:  
 A) PROVIDE CORNER OFFSET LAPS CRANKED IN AT 45 DEGREES;  
 B) PROVIDE TANGENTIAL OFFSET LAPS AT INTERIOR BARS;  
 C) UNDER NO CIRCUMSTANCES SHALL OFFSET LAPS BE DETAILED AND INSTALLED SO THAT ADJACENT BARS FROM ONE LEVEL HAVE A CLEARANCE OF LESS THAN 1-1/2".
- 2) VERTICAL BAR LAPS SHALL BE 30 BAR DIAMETERS, UNLESS NOTED BY "1", WHERE CLASS C LAPS SHALL BE UTILIZED.
- 3) MINIMUM CLEARANCE OF REINFORCING TO FACE OF CONCRETE SHALL BE 1-1/2" MINIMUM.

**GROUND FLOOR FRAMING PLAN  
BUILDING C**  
SCALE: 1/4" = 1'-0"